

 1 2 D A Y S 



Effortless Elf Scenes



SETUP INFORMATION - 2024

Introduction



WHO ARE WE?

We're a Melbourne based family who love all things Christmas, especially the adventures with our Elf, Cheeky.

Our names are Keil and Amelia, a husband and wife team who embrace this labour of love with many hours of craft and packing, while the creative directors of this outfit are our two boys, Tristan and Eli, who drive the ideas behind many of our scenes.

OUR REASON

We loved hiding or staging our Elf doing silly things and then seeing the reaction of our boys the next morning.

For years this tradition was a highlight of Christmas but eventually they had to learn the truth. We thought this would be the end of our tradition, boy were we wrong!

Our Boys began making scenes of their own for the family, and eventually they asked if we could share our scenes with other people.

And that idea has now turned into Effortless Elves!

THIS PACK

This pack is designed to be as effortless for parents as possible. Everything is included for an Elf scene, though you will of course need your own Elf and may need to use some common household items to setup a scene in your desired location (sticky tape, blue tack, etc).

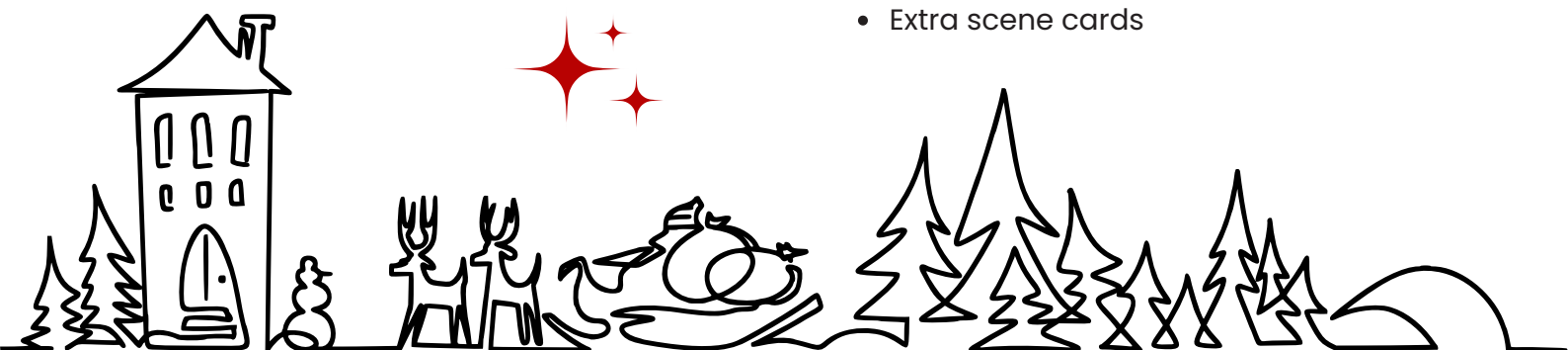
Scenes have been designed for a single Elf but multiple elves can be added easily enough. The setup information includes photos for inspiration and helpful recommendations for specific scene requirements.

Each scene is individually packaged and includes a display or instruction card.

BONUS KIT

This year, all packs come with a bonus kit which includes:





- a stand to display scene cards
- Wires, velcro dots and instructions to make your Elf poseable
- Report cards to encourage or reward good behaviour
- Extra scene cards







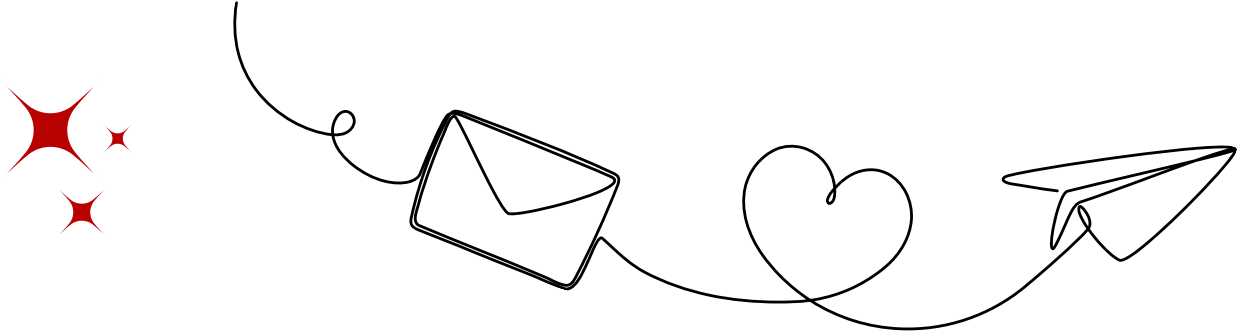
Suggested Scene Order

We think this order provides a fun progression from Elf arrival through to departure night, but parents do not need to stick to this list. All scenes are independent of each other, so pick ones that will make your day effortless!



Arrival Night
Santa's Magic Key
Snowman Ornament
Find-a-Elf Book
Ice Fishing
Streamer Bomb
Sponge Cake
Smartie Pants
Sleepy Elf
Cheeky Spinner Game
Elf-Self Portraits
Departure Night





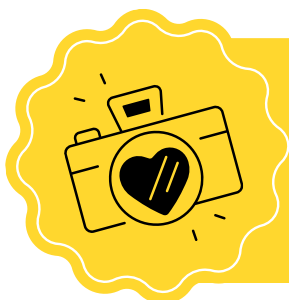
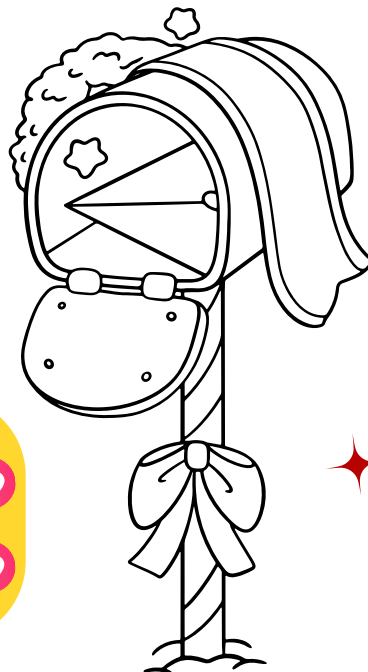
Arrival Night

They're here! Elves have arrived and their 2024 adventures are beginning.

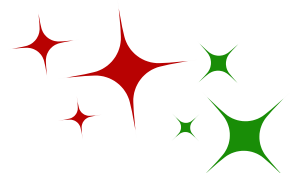
For obvious reasons we recommend using this scene first.

This year your Elf arrives via good ol' fashioned snail mail, complete with their very own little letter for the family!

We recommend placing your Elf in the envelope, but sticking out enough so they can hold their little letter. You could place their legs inside the envelope and have their arms and head sticking out of the opening, or you could seal the envelope up completely and cut a slit/hole in the envelope and pose your Elf so it looks like it burst out!



**This scene would
be great for social
media photos!**





Santa's Magic Key



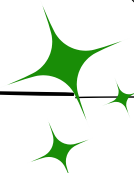
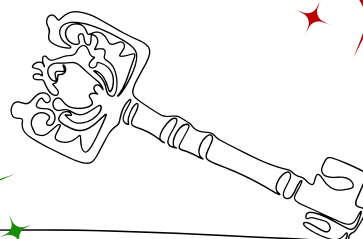
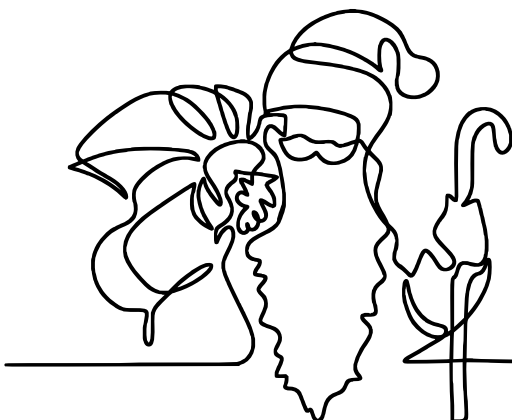
Ever needed to explain how Santa delivers presents to homes that don't have chimney's?

Did you rely on the tried, but maybe not very trusted, magic key story?

Well, now your Elf is finally bringing you proof to back up those claims!

Sure, it's a replica one (Santa needs the real one!) but it's genuine replica from the North Pole giftshop! Yep, 100% genuine replica.

Irrefutable proof! 🕶️





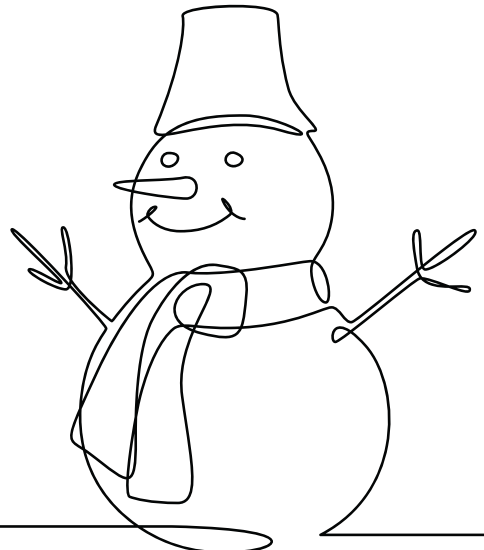
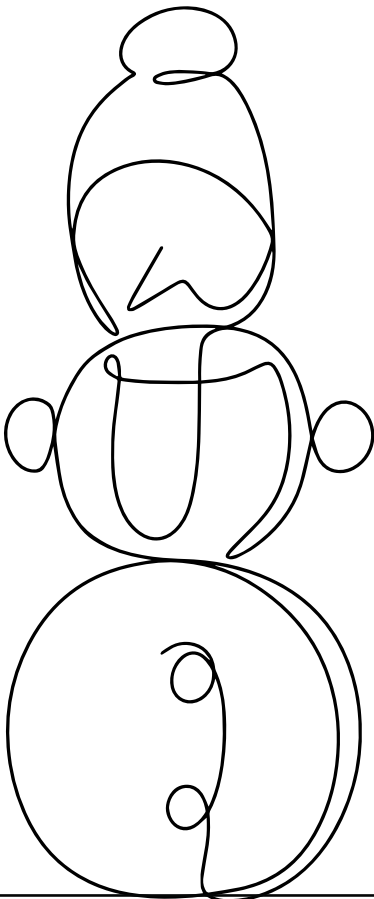
Snowman Ornament



Everyone loves a fun craft activity!

For this scene, your Elf brings everything needed to make a cute little snowman ornament to hang on your tree.

We've not included specific instructions for making the ornament because the scene card provides a enough of an idea - you essentially just need to thread the beads onto the string to make a snowman!





Find-a-Elf Book



OK, this is an easy to set up scene that is sure to keep the family amused for many hours!

It's also a great one to keep in reserve for when you here these dreaded words:

"I can't find the Elf, they didn't come back!"

(probably because you tidied last night's scene after they went to bed, then got side-tracked and forget to set up another scene!)

This scene gives you the perfect trump card!

"It'll be alright, they're probably just hiding some where!"





Ice Fishing



We almost didn't include an ice fishing scene because, when we first did it, our eldest boy nearly made a huge mess! 😊

We set our Elf so it looked like he was ice fishing in the toilet. It looked great!

But we forgot how absent-minded our boys could be first thing in the morning. 🤔😂

Thankfully he noticed in time and disaster was avoided!

The scene idea is pretty simple but will take a few moments to setup. We've included the fishing props but you will need to use some cling wrap from your kitchen for the "ice".



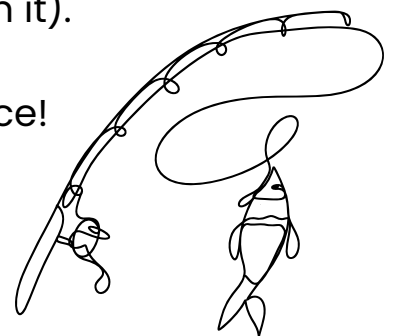
You will need to make a fishing pond by covering something like a sink with cling wrap. You will need to poke or cut a hole for your Elf to fish through. You can sprinkle some flour around the hole, and generally over the cling wrap, to make it look more like ice.

Then position your Elf so they're fishing in the ice hole!

If you're prepared to risk a potential messy accident, then we encourage you to set this scene up on a toilet. It really does look great.

We recommend making two layers of cling wrap: the bottom layer is on the bowl itself (and can sag a little) and the top layer is on the toilet seat (which is the layer with the fishing hole in it).

Two layers will allow you to place a fish under the ice!



Streamer Bomb



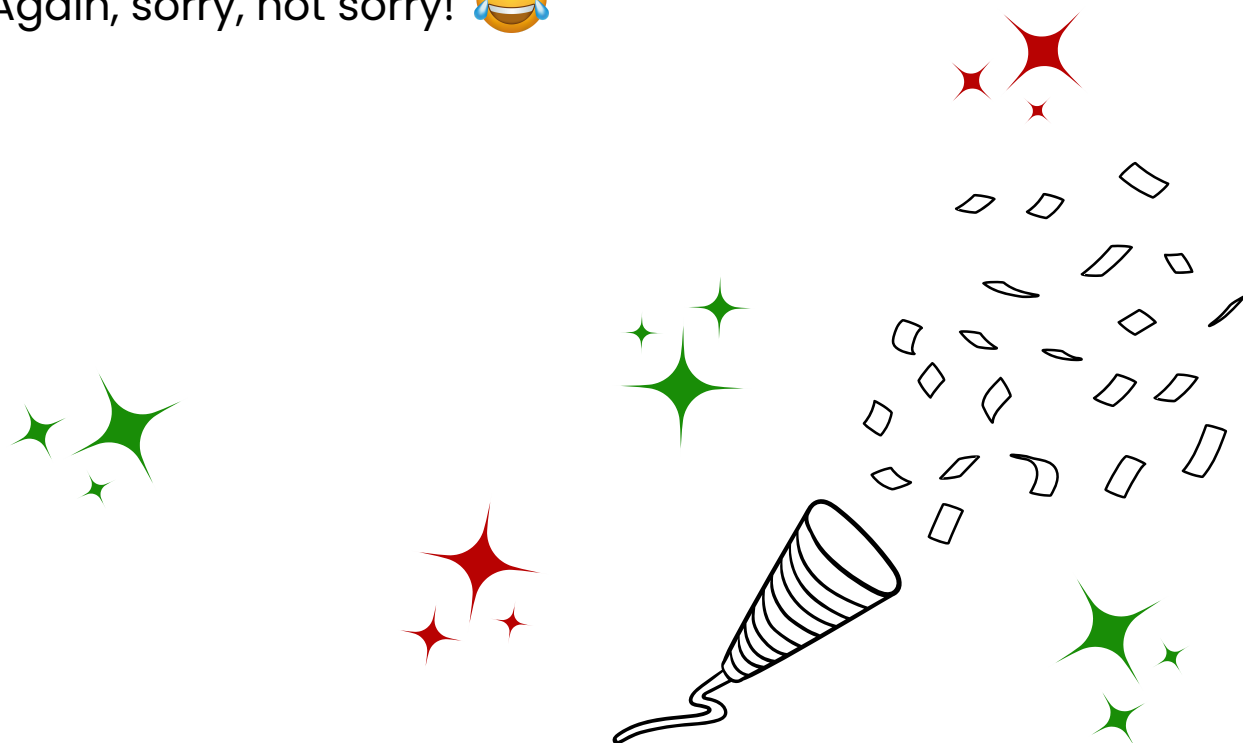
Sorry, not sorry! 😂

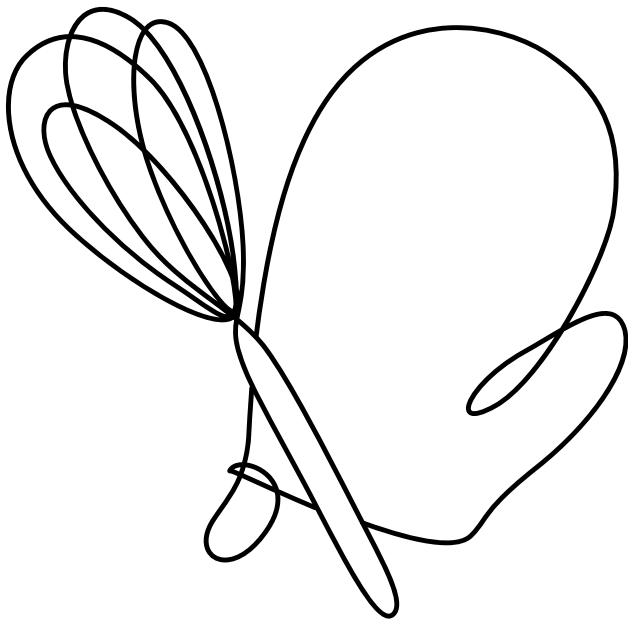
A messy streamer Elf scene is almost mandatory; and hey, at least we didn't make it a confetti bomb!

But despite the mess this scene creates, it is fun!

As the parent, you get to decide whether you have all the fun using the streamer bomb to create the mess, or you save that fun for the kids and let them create the mess.

Again, sorry, not sorry! 😂





Sponge Cake



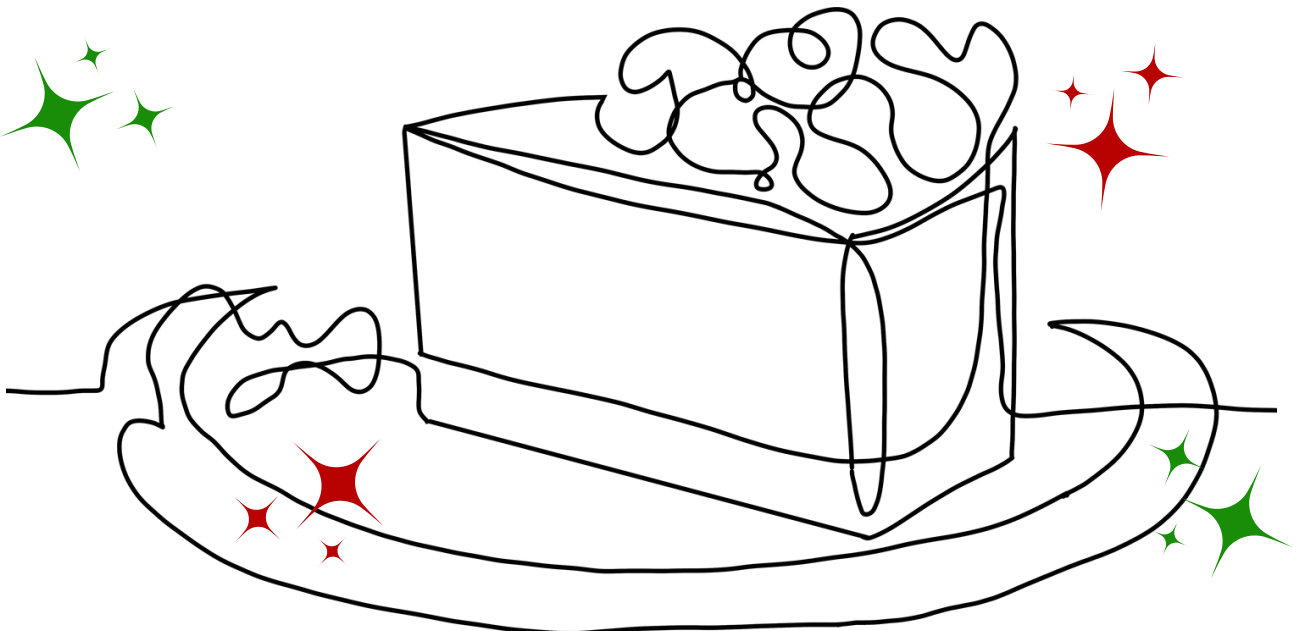
All Elves can rival dads when it comes to bad pun jokes.

This scene proves that point! 😊

Your Elf has been busy in the kitchen making a fabulous “sponge” cake, complete with icing and shaved chocolate!

Setting this scene up can be super quick, just place your Elf with the included props near their scene card.

Of course, you could also have a little extra fun with this scene! Maybe your Elf made an awful mess of the kitchen while making the cake? For the low cost of a broken egg, some sprinkled flour, and a few dirty dishes, you could generate some wonderful morning giggles from the family!





Smartie Pants

Yep, your Elf is up to puny mischief. Again!

This time, your Elf has created a finding game - using their undies!

But at least they've brought a reward for finding them 😂

(when hiding their undies, we recommend that you remove all their undies from their usual spot, then hide the ones they need to find, and then properly hide the rest so they cannot find them.





Sleepy Elf



OK, everyone needs a rest – even Elves!



This is truly a quick win scene.

It's simple to set up and, if you play your cards right, it might even help you to encourage some extra quiet play time so that ~~you can relax~~ the Elf doesn't get woken up!



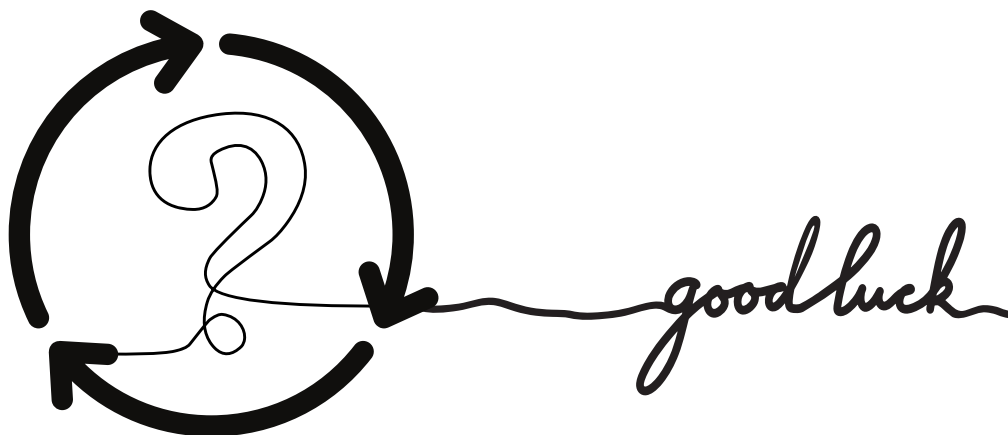


Cheeky Spinner Game

Oh, this could be fun for the parents!

Will they risk it for the biscuit?

Will your reward literally be a biscuit? Or will you entice them with something even greater to increase your odds of getting more chores done around the house?





Elf-Self Portraits



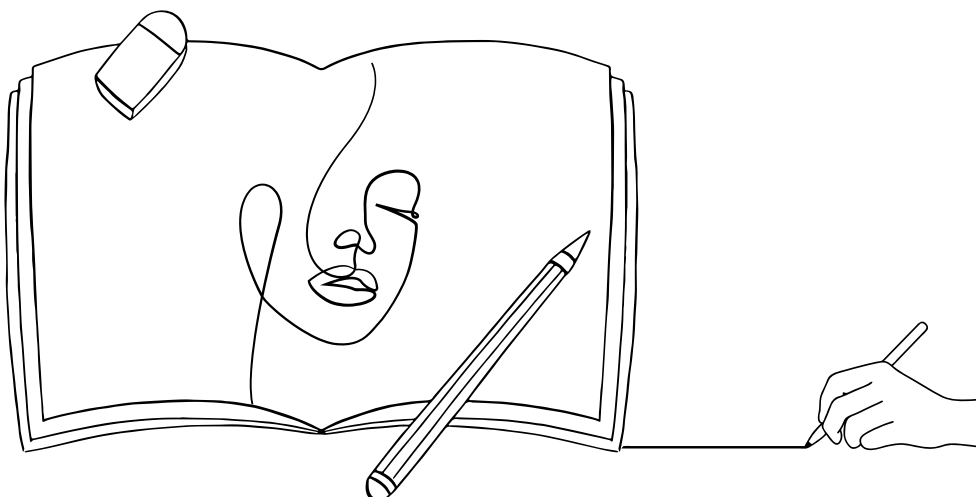
Have you ever wondered what you would look like if you were an Elf?

Well now you can find out using this Elf Bioglyph!

The scene includes the instructions and several ways to draw the Elf-self portraits.

We recommend practicing with the pen and paper before using the scratch card.

When they've mastered their own portrait, encourage them to draw the rest of the family!





Departure Night

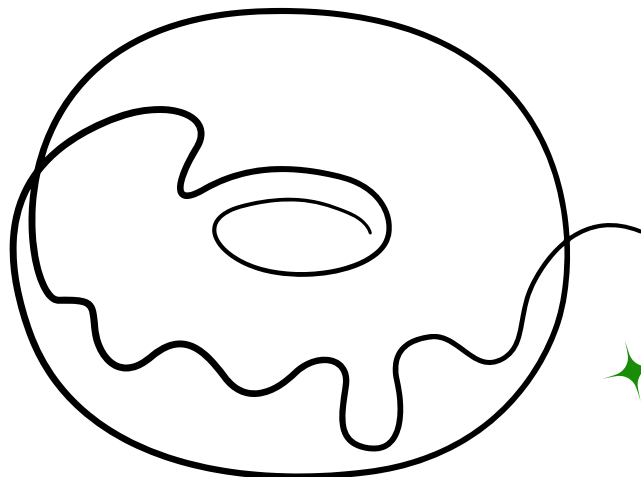
And here we are, we've arrived at the saddest/happiest night of your Elf adventures.

Well done! We're sure you did an amazing job setting up scenes each night. We hope our pack made the chore a little easier for you and, most importantly, we hope your family shared some wonderful moments together

Now, the last scene. It's time to say goodbye to your Elf. 

This year your Elf is departing in the best way possible - with a donut pun!

While we intended this scene to be used on departure night, we also thought that some families may have their own departure traditions, so we've included a second scene card that isn't departure related.



Thank
You



WITH CHRISTMAS
LOVE FROM

**AMELIA, KEIL,
TRISTAN & ELI**

We hope our Elf adventures help your family
create wonderful Christmas memories.